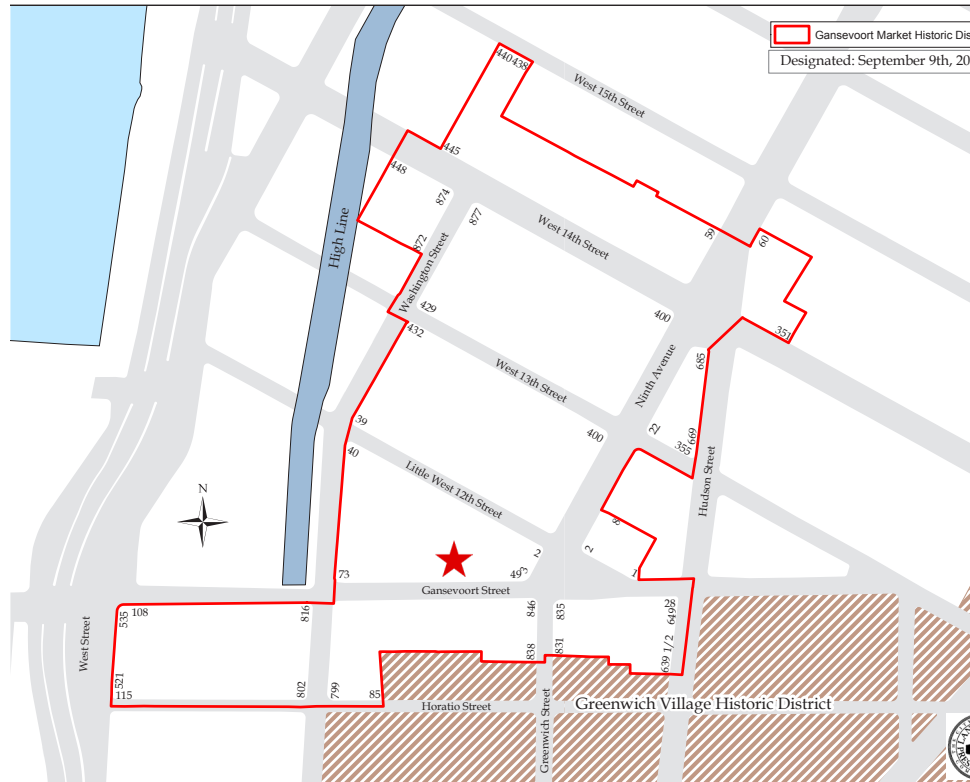


RH 55 GANSEVORT STREET, MANHATTAN
PROPOSED SIDEWALK CAFE AND AWNING ALTERATION



JACQUELINE PEU-DUVALLON
HISTORIC PRESERVATION CONSULTING, LLC

Gansevoort Market Historic District



55 Gansevoort Street, Manhattan



2017: Looking west on Gansevoort Street prior to the start of renovation



Proposed Sidewalk Café with LPC-approved façade restoration

55 Gansevoort Street, Manhattan Historic Photos



1936, by Berenice Abbott (MCNY)



1940's Tax Photo (NYC Municipal Archive)

55 Gansevoort Street, Manhattan
Historic Photos



2003 Designation Photo (NYC LPC)

55 Gansevoort Street, Manhattan
Historic Photos



2003 Designation Photo (NYC LPC)



2003 Designation Photo (NYC LPC)

Sidewalk and Ground Floor Condition Prior to On-Going Renovation



55 Gansevoort Street looking west



Sidewalk looking west



Sidewalk looking east

District Context Photos : Sidewalk Cafes



52 Gansevoort Street



73 Gansevoort Street

District Context Photos : Sidewalk Cafes



835 Washington Street



420 West 13th Street

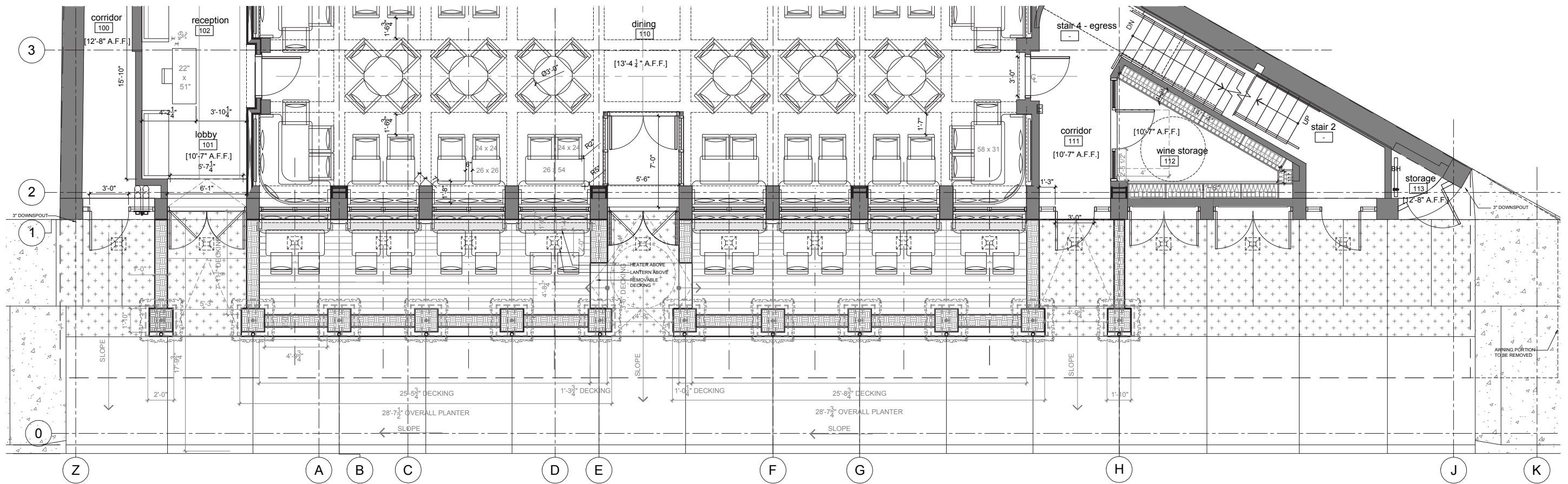
District Context Photos : Flat Glass Awnings



21-27 9th Avenue

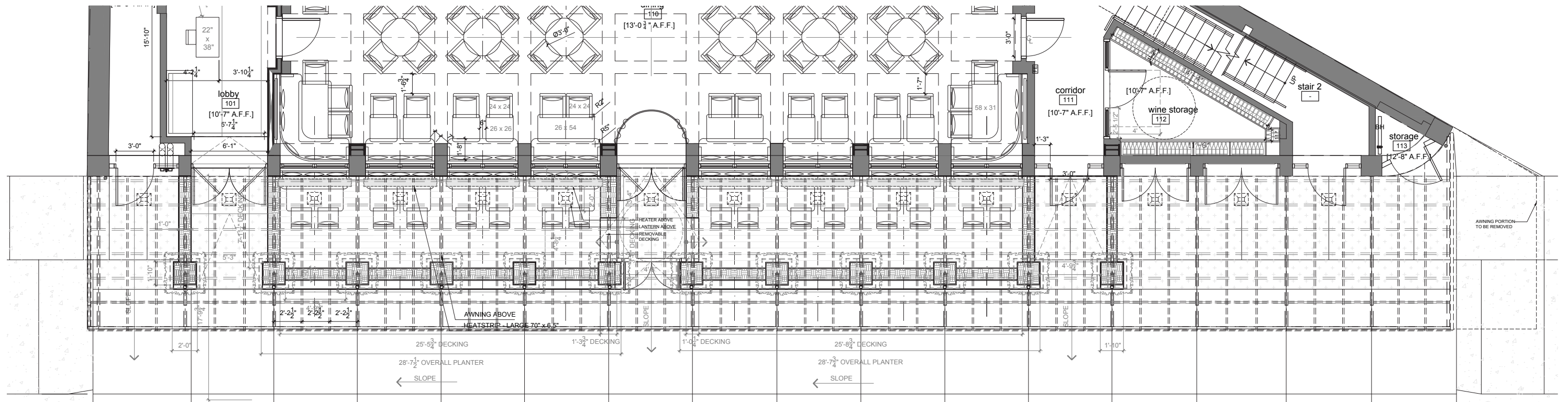


402 W 13th Street



Proposed Sidewalk Cafe Plan

SCALE: 1/8" = 1'-0"



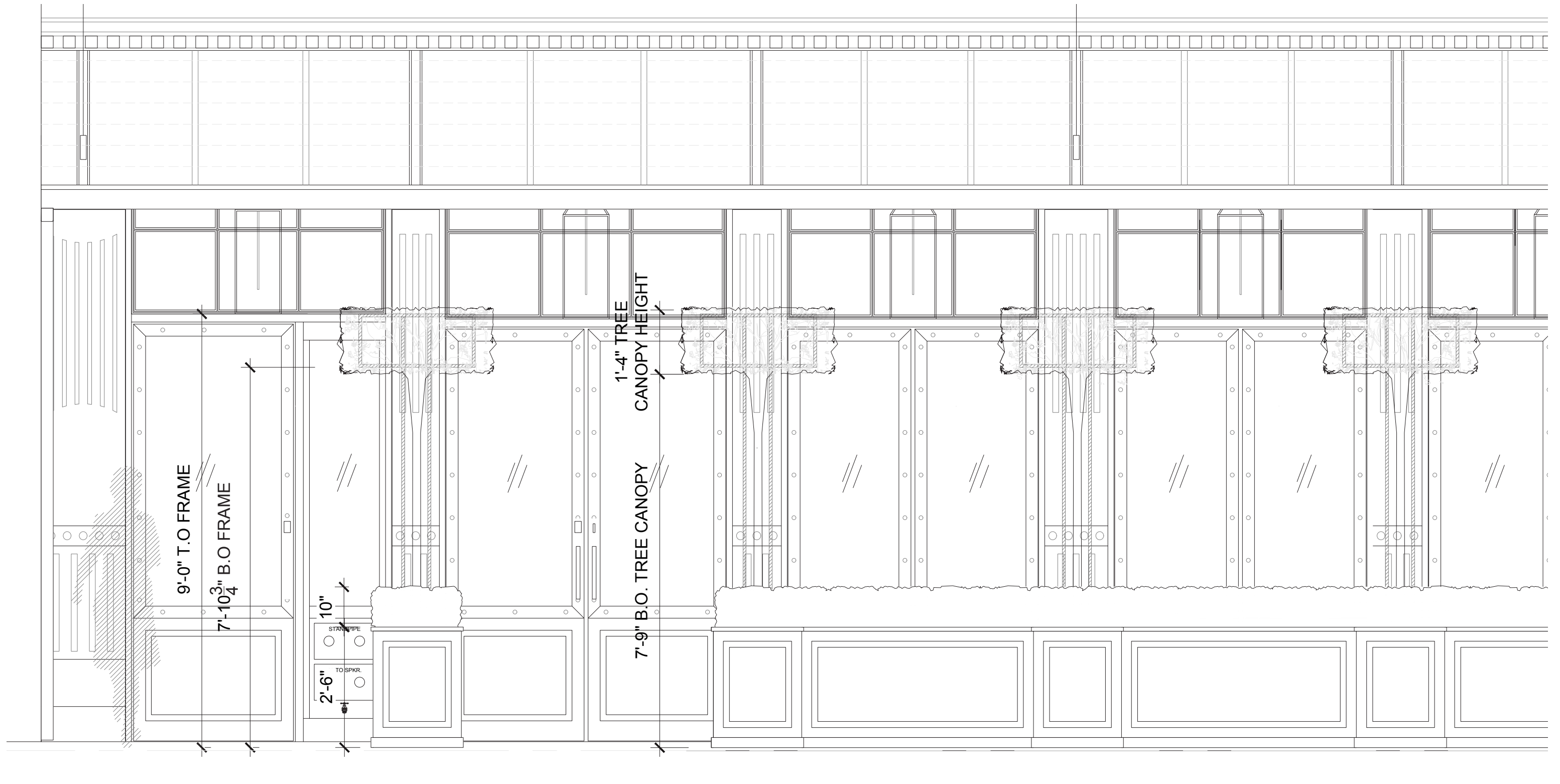
Proposed Sidewalk Cafe with New Awning Layout

SCALE: 1/8" = 1'-0"



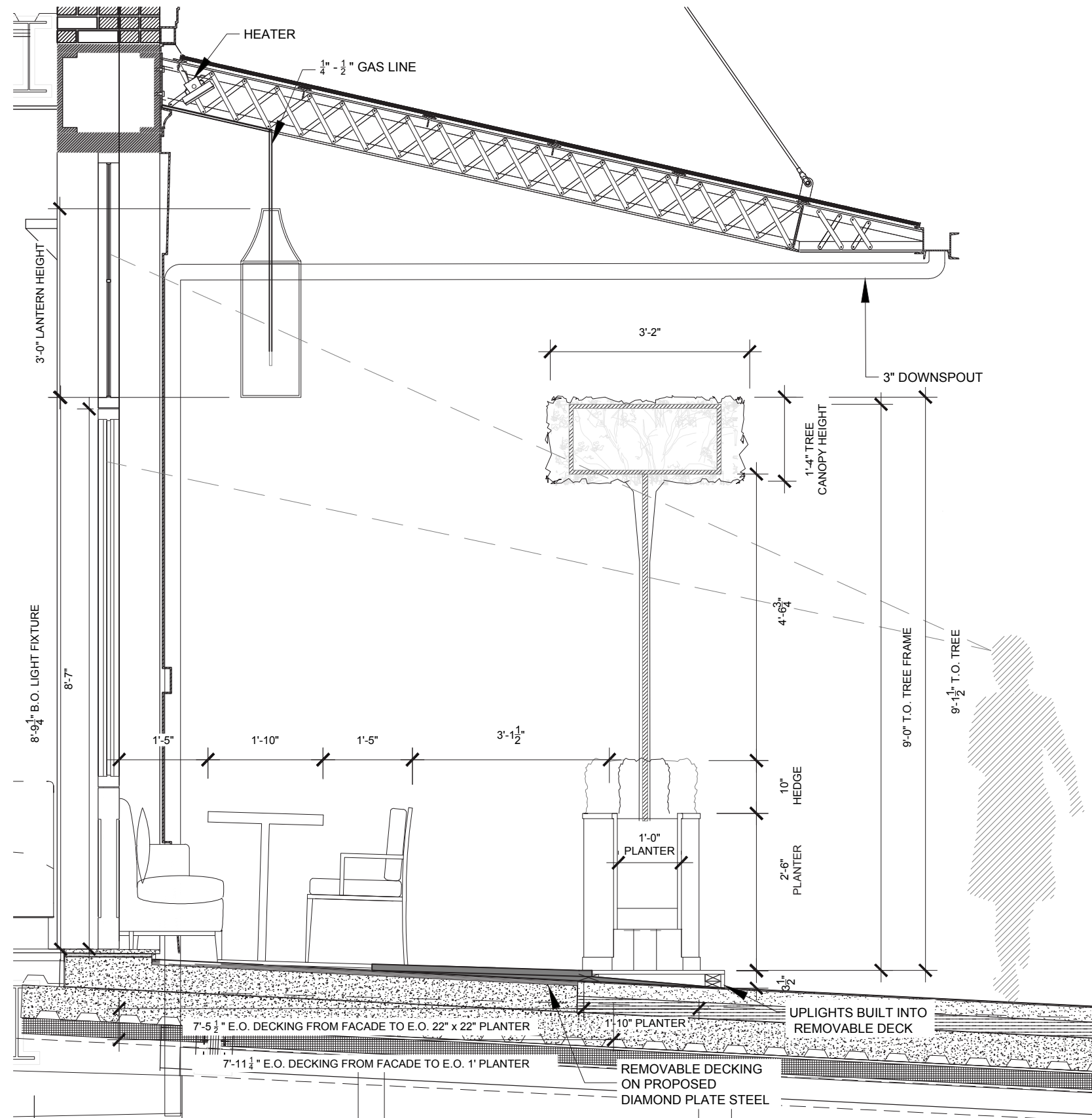
Proposed Sidewalk Cafe Elevation

SCALE: 1/8" = 1'-0"



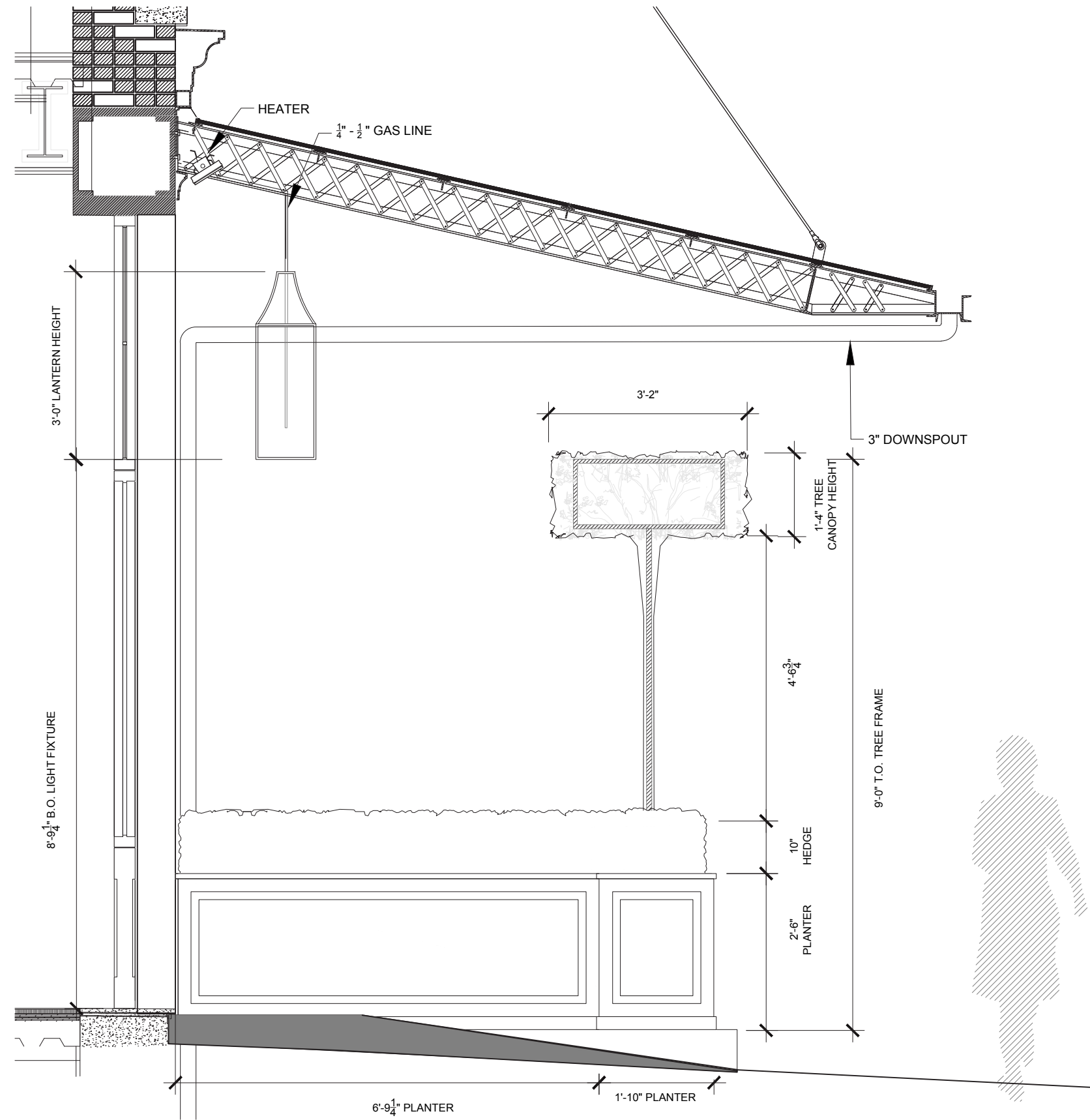
Proposed Sidewalk Cafe Enlarged Elevation

SCALE: 1/2" = 1'-0"



Section Through Sidewalk Cafe

SCALE: 1/2" = 1'-0"



Section at Guesthouse Entry

SCALE: 1/2" = 1'-0"



Proposed Sidewalk Cafe Looking East



Proposed Sidewalk Cafe Looking West



Proposed Sidewalk Cafe Looking North



MATERIALITY



PAINTED WOOD PLANTER



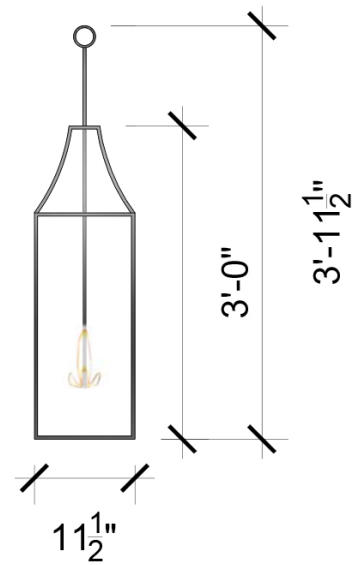
TREE & TREE ARMATURE



BOXWOOD HEDGING



REMOVABLE DECKING



LANTERNS



HEATERS